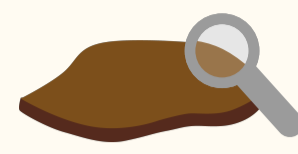


HEALTHY SOILS FOR HEALTHY COMMUNITIES INITIATIVE

INITIATIVE OBJECTIVES

- ▶ Integrate brown, blue, and green infrastructure
- ▶ Raise public and policy awareness
- ▶ Facilitate community-driven collaboration
- ▶ Conduct cutting-edge research
- ▶ Develop evidence-based practical solutions

PHASE ONE: NEEDS ASSESSMENT



Determine the current status of LA's urban soils



Identify current and long-term soil challenges and community needs



Provide a framework to address needs

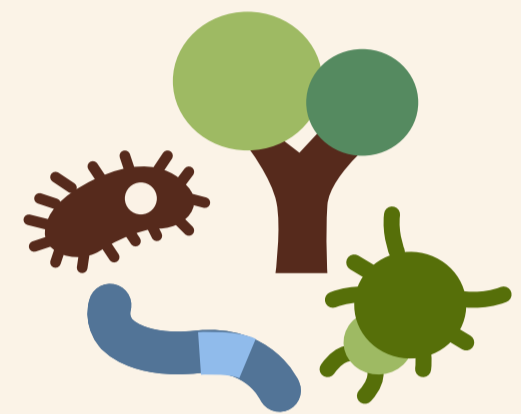
THE IMPORTANCE OF HEALTHY SOILS



Globally, about **95% of our food** comes from soils



Soils **store and filter water**, mitigating floods and droughts

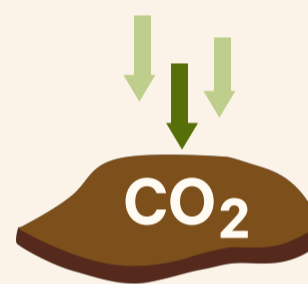


Soils host about **25%** of our planet's **biodiversity**

Soils provide a **foundation** for buildings and infrastructure



(FAO, 2015; FAO, 2017; Fortuna, 2012)



Soils **sequester more carbon** than the atmosphere and terrestrial vegetation combined



Soils support **plant growth** and recycle essential nutrients

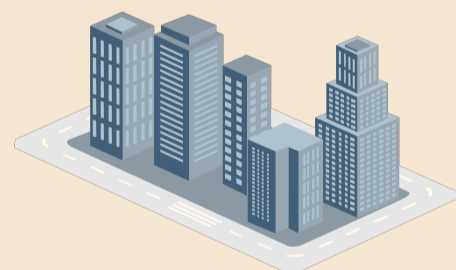
COMMON SOIL ISSUES



Soil Contamination



Soil Compaction



Soil Sealing



Climate Change

LA CITY LAND COVER (2016)

- 48 %** Impervious Surfaces
- 24 %** Tree Canopy
- 16 %** Shrubs and Grasses
- 11 %** Bare Soil
- 0 %** Water

To learn more, visit

<https://www.treepeople.org/healthy-soils-healthy-communities-initiative>

Funding Agency: **Accelerate**

Resilience L.A., a sponsored project of Rockefeller Philanthropy Advisors

TAKE ACTION



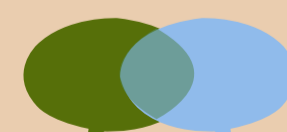
Policy Support



Community Engagement



Provide Resources



Research Collaboration



Project Implementation



TREEPEOPLE